



# **RISA Webinar**

## **New Features in RISA**

**Presenter: Deborah Penko, P.E.**





Ver. 12.0



Ver. 8.0



Ver. 6.0

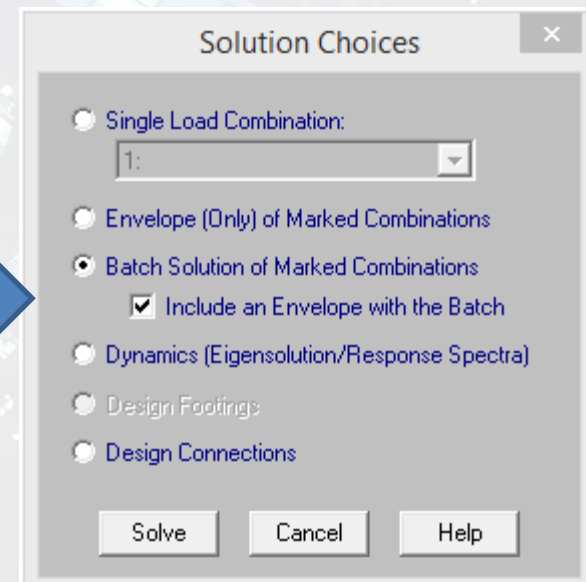
RISA PROGRAMS

## Envelope with Batch Solution

Envelope Solution: Worst Case Results → Min and Max

Batch Solution: Results for Each LC

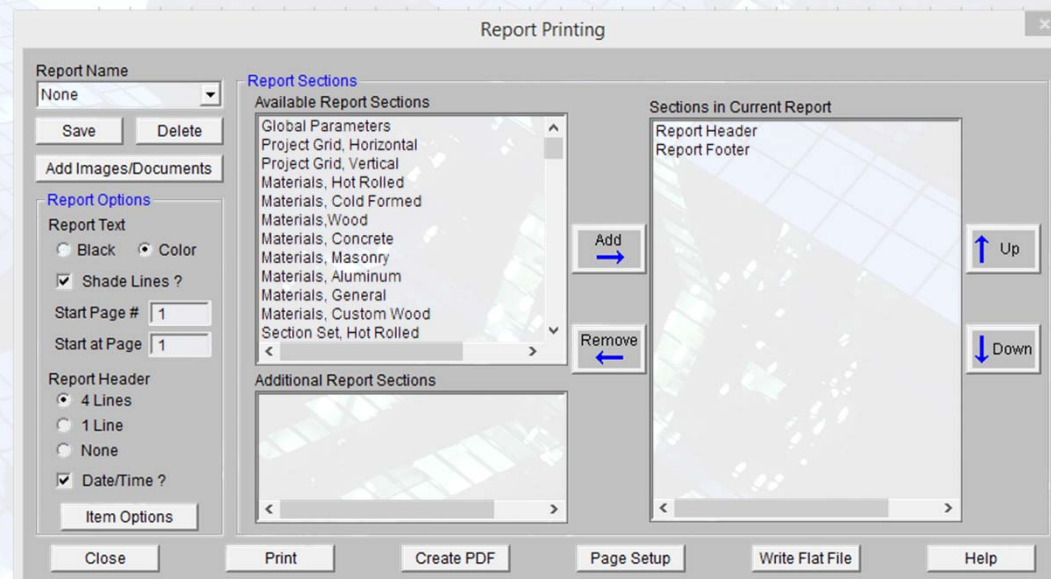
Now Solve  
Together



## Envelope with Batch

## New Report Printing

- Add Company Logos
- Include Images
- Detail Reports
- PDF, PNG, JPEG

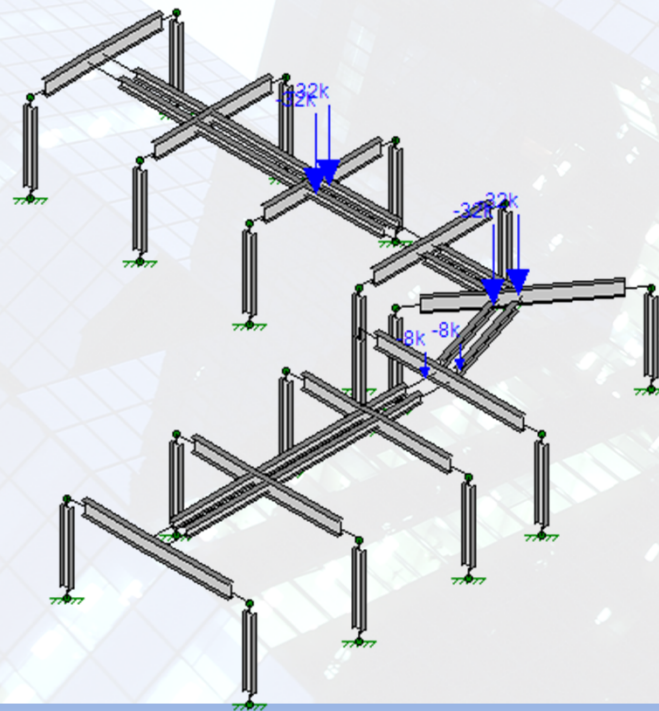


## New Print

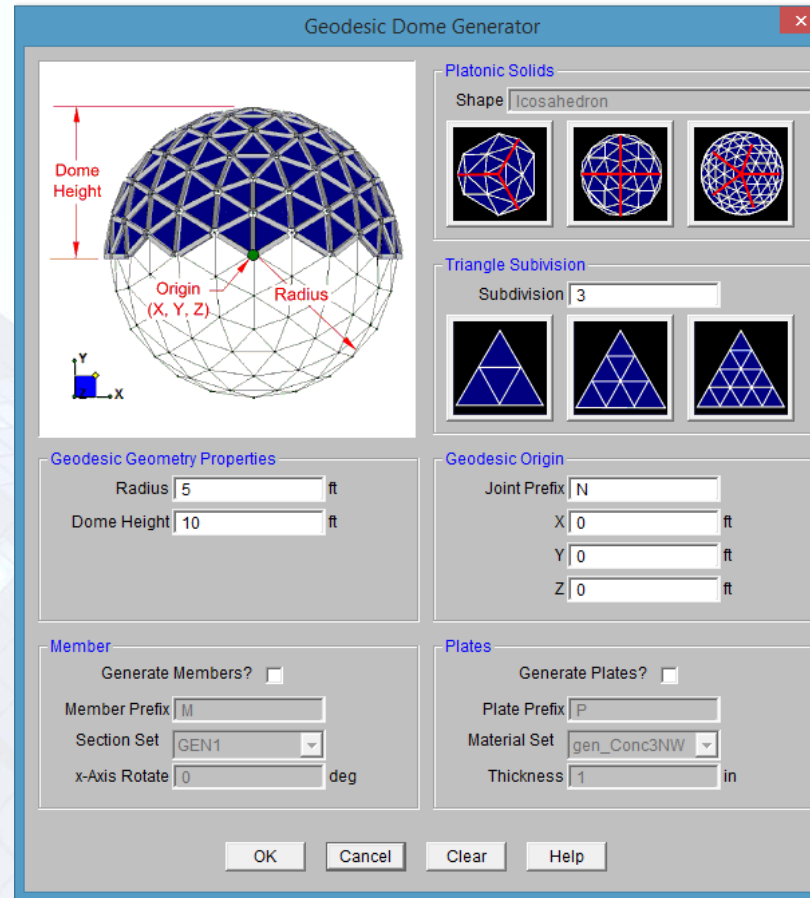


## Improved Moving Loads

- Added AREMA Railway Loading to the Library
- Moving Load Animation Shown at Step-By-Step Locations
- Added the Maximum Load Location to the Reports



Moving Loads



- Quickly build a Dome with Plates and Members

## Geodesic Dome

Member Design Rules Editor

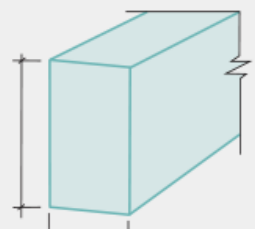
Design Rule Label: Typical Member Type: Beam

Size/UC Rebar

Min Depth:  in  
Max Depth:  in

Min Width:  in  
Max Width:  in

Max Bending Check:   
Max Shear Check:



Member Design Rules Editor

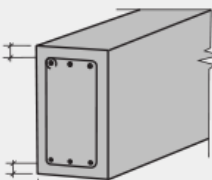
Design Rule Label: Typical Member Type: Beam

Size/UC Rebar

☒ Optimize Rebar  
☐ Explicit Rebar

Top Cover:  in  
Bottom Cover:  in  
Side Cover:  in

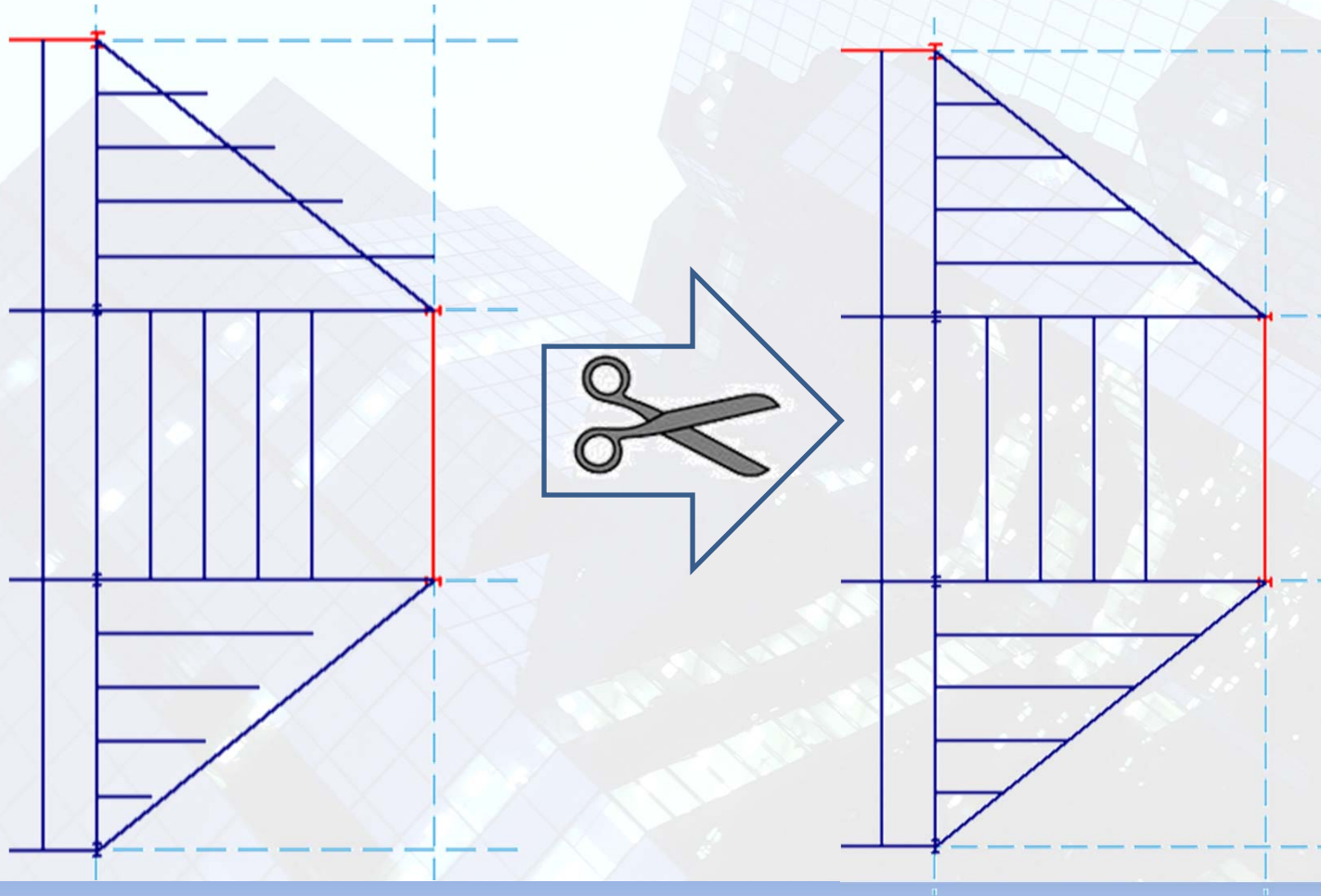
Min Flex Bars:   
Max Flex Bars:   
Shear Bars:   
Legs per stirrup (2 shown):



➤ Enhanced Member Design Rules  
with Graphical Rebar Optimization

Member Design Rules

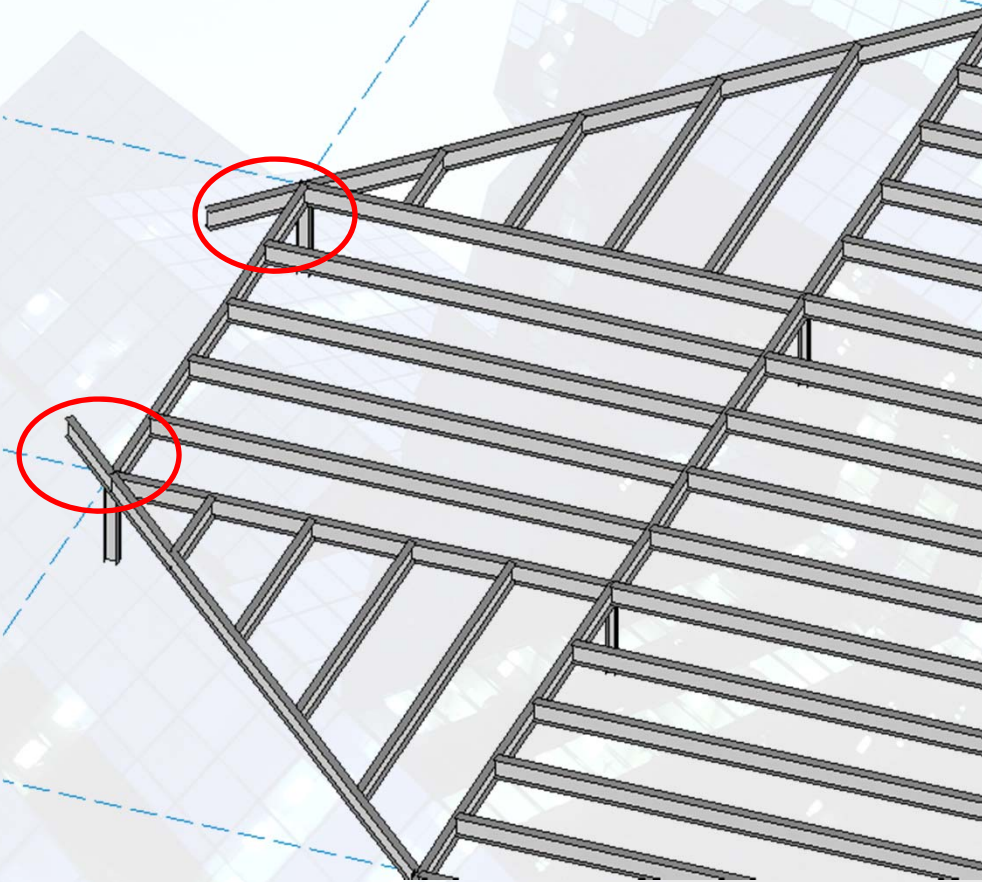
## ➤ Trim & Extend



Modeling Tools



- Draw Outriggers at any angle from the columns



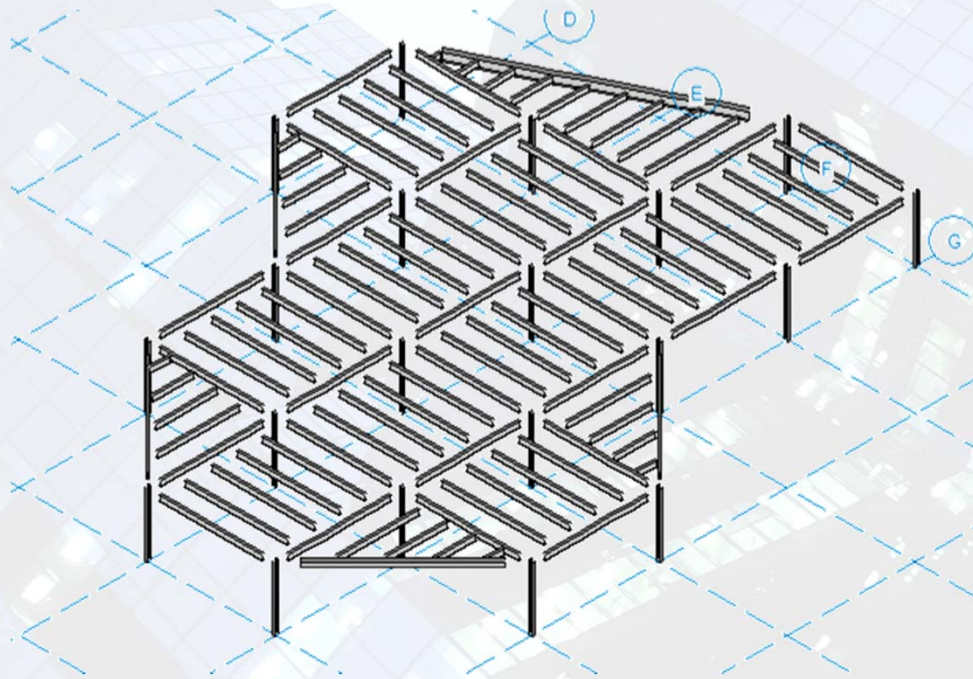
Column Outriggers

➤ Itemized list of foundation materials

Material Takeoff				
	Material	Quantity	Volume[yds^3]	Weight[K]
1	<b>Slabs</b>			
2	Conc4000NW	1	1008	3946.2
3	Conc3000NW	1	144.5	565.8
4				
5	Beams			
6	Conc4000NW	3	5.6	21.7
7				
8	Footings			
9	Conc3000NW	6	2.3	9.1
10				
11	Pedestals			
12	Conc4000NW	30	3.9	15.3
13				
14	Totals			
15	Conc3000NW		146.8	574.9
16	Conc4000NW		1017.4	3983.2
17	Total Concrete		1164.3	4558.1

## Material Take-Off

# Let's Try the New Features!



Examples



# Coming Soon!

- RISAFloor ES





## Additional Resources

- Release Notes
- [www.risanews.com](http://www.risanews.com)
- <http://www.risa.com/newfeatures/>
- email: [support@risa.com](mailto:support@risa.com)
- User's Guides available at [www.risa.com](http://www.risa.com)

Presenter: Deborah Penko, P.E.





# Questions?

Please let us know if you have questions.

We will answer as many questions as time permits during the webinar.

Once the webinar is closed, we will post all Q&A's, the PowerPoint slides to our website: [www.risa.com](http://www.risa.com)

For further information, contact us at: [info@risa.com](mailto:info@risa.com)

Thank you for Attending!

